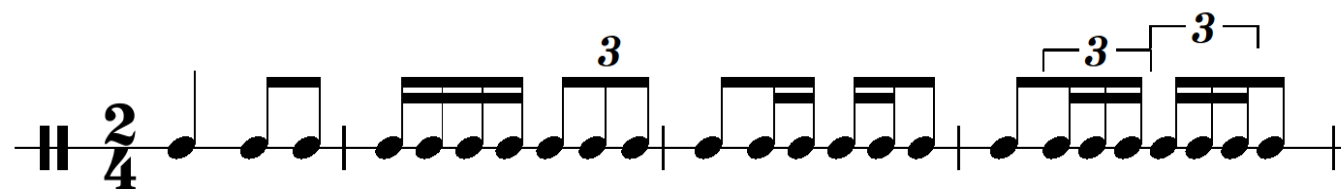


Άσκηση Ακοής – Σολφέζ – Ρυθμική Αγωγή I
ΤΜΕΤ, Πανεπιστήμιο Μακεδονίας

Μάθημα 3^ο

Μόνικα Ανδριανοπούλου

1α. Ρυθμικό 'call & response'



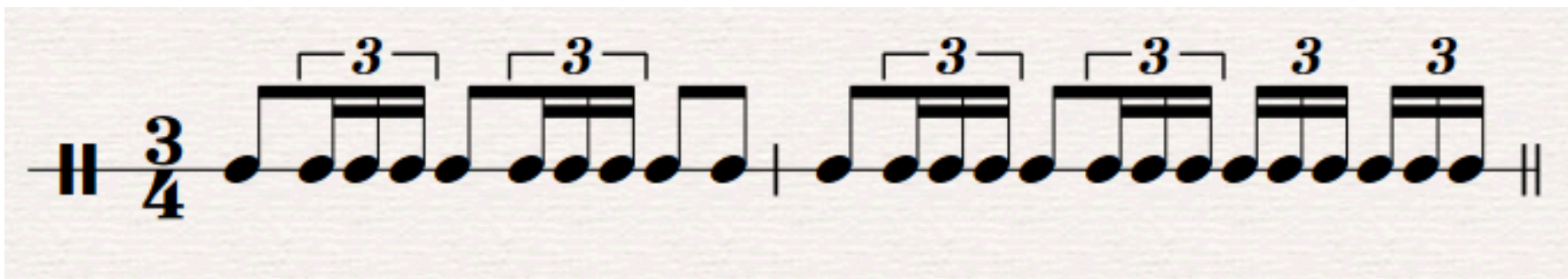
1β. Ανάγνωση: Εισαγωγή Jersild σελ.2, πίνακες C & D
Ασκήσεις 4, 5, 7, 8, 9, 10.

Adagio

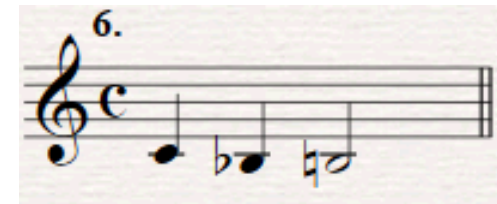
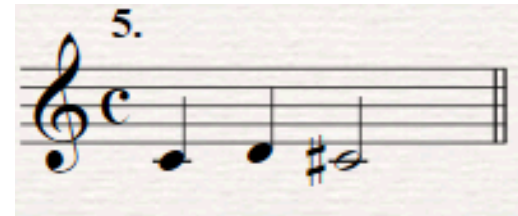
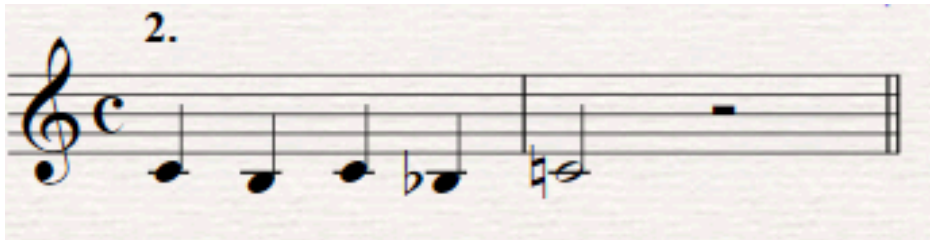
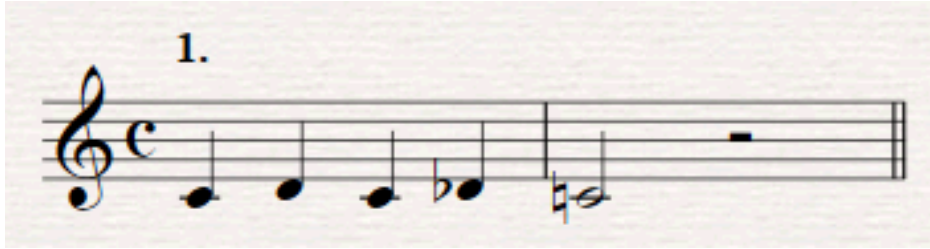
9. $\frac{4}{4}$



1γ. Ravel (1875-1937), *Boléro* (1928): ρυθμικό ostinato
(ακουστική αναγνώριση & καταγραφή)



2α. Διαστήματα: Τόνοι-ημιτόνια: τραγούδι (& κίνηση)



2β. Διαστήματα: Τόνοι-ημιτόνια: τραγούδι μελωδίας-dictée

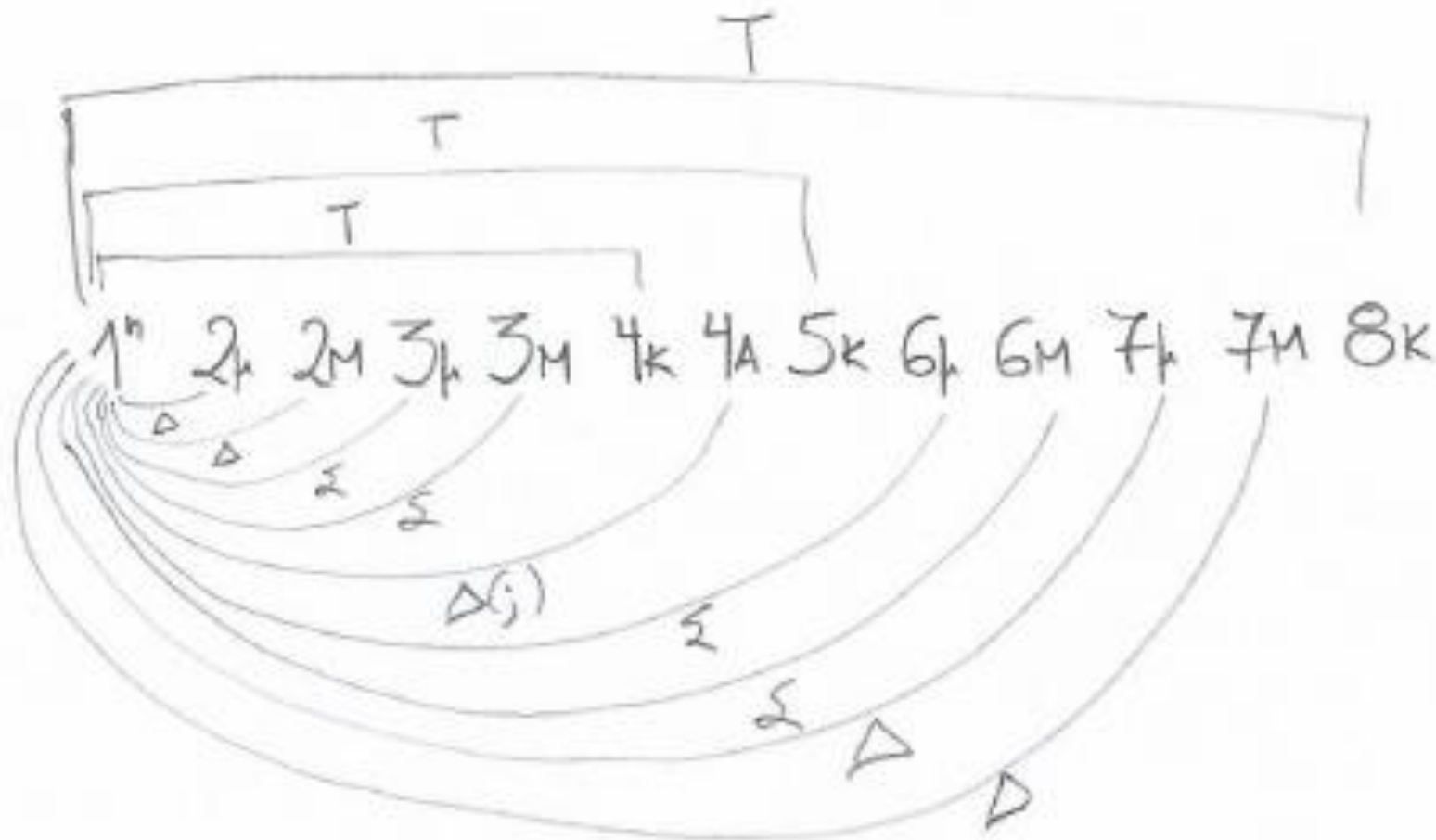


2γ.Τα 12 διαστήματα και οι ποιότητές τους

T: ~

Σ: ~

Δ: ~



Τέλεια σύμφωνα (καθαρά):

4K
5K
8K

Ατελή σύμφωνα (σύμφωνα):

3μ, 3M
6μ, 6M

Διάφωνα:

2μ, 2M
7μ, 7M

2δ. Η αρμονική σειρά (Μελωδικές σημειώσεις, σελ. 15)



Ένας τρόπος να αντιληφθούμε τους φωνητικούς υπέρτονους,
είναι να τραγουδήσουμε τα παρακάτω φωνήεντα πάνω σε ένα
σταθερό τονικό ύψος:

oo – oa – or – o – ar – a – e – é – i – ee – ü

Bannan, N. (2010). Embodied Music Theory: New Pedagogy for Creative and Aural Development.
Journal of Music Theory Pedagogy, 24, 197-215

Τραγούδι υπερτόνων:

https://www.youtube.com/watch?v=VGbFB91eM34&ab_channel=MiroslavGrosser-OvertoneSinger

2ε.Τραγούδι
υπερτόνων



Τραγούδι υπερτόνων (περ. 1':10''):

https://www.youtube.com/watch?v=VGbFB91eM34&ab_channel=MiroslavGrosser-OvertoneSinger

2ζ.Τα 12 διαστήματα και οι ποιότητές τους

=>**Οι 3 ιδιότητες των διαστημάτων:** η πυκνότητα διάδρασης των δύο νοτών, η απόσταση από τον μπάσο, και η 'αρμονικότητα', επηρεάζουν την αίσθηση του κάθε διαστήματος και του δίνουν ξεχωριστό χαρακτήρα, και στη μελωδική (διαδοχικό άκουσμα) και στην αρμονική (ταυτόχρονο άκουσμα) μορφή του.

Ακουστικά παραδείγματα:

8βα:

https://www.youtube.com/watch?v=QImFm4Y_QPM, αρχή (Beethoven 'Appassionata', No.23 Op.57)

<https://www.youtube.com/watch?v=qdgNQN-PiRA>, αρχή



<https://www.youtube.com/watch?v=p3rl-nFMFZE>, αρχή



<https://www.youtube.com/watch?v=lw-Wmm8IUu>, αρχή



3α.Εσωτερική ακοή & τραγούδι 8βας (ανιούσες & κατιούσες), &
Skips of Octaves, Vaccai (μελ. σημειώσεις, σελ.17)

3β. Ακουστικά παραδείγματα:

5^η: (βλ. και μελ.σημειώσεις, σελ. 13-14)

https://www.youtube.com/watch?v=PfBTXlfufxI&ab_channel=ProjetoLouvai-EscoladeLouvor

https://www.youtube.com/watch?v=UNyf-eHsJ2U&ab_channel=Dr.KierstinBible

4^η: (βλ. και μελ.σημειώσεις, σελ. 13-14)

https://www.youtube.com/watch?v=E6CVxtPcW78&ab_channel=EdicionesLaLlave

<https://www.youtube.com/watch?v=kGnCQKRwMfc>

(a) *Tu patris sempiternus es filius*, in parallel organum at the fifth below

CD 1|48

Principal Voice
Organal Voice

Tu pa - tris sem - pi - ter - nus es fi - li - us.

Tu patris sempiternus es filius.

You of the father are the everlasting son.



(b) *Sit gloria domini*, in parallel organum at the fifth below, with octave doublings

49

Organal Voice
doubled



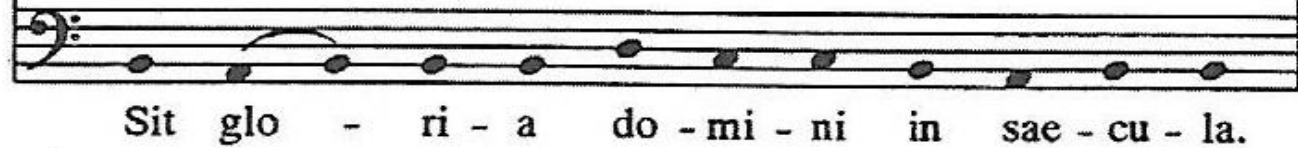
Sit glo - ri - a do - mi - ni in sae - cu - la.

Principal Voice
Organal Voice



Sit glo - ri - a do - mi - ni in sae - cu - la.

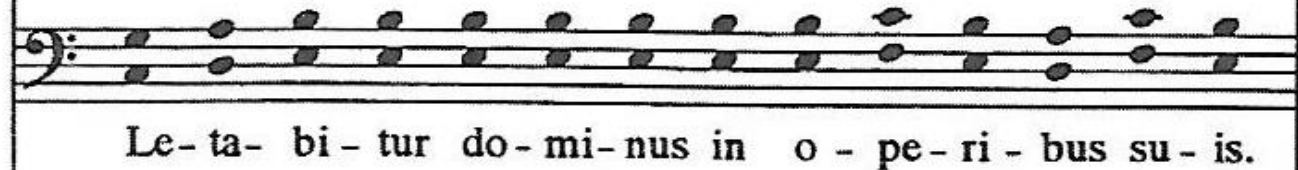
Principal Voice
doubled



Sit glo - ri - a do - mi - ni in sae - cu - la.



Le - ta - bi - tur do - mi - nus in o - pe - ri - bus su - is.



Le - ta - bi - tur do - mi - nus in o - pe - ri - bus su - is.



Le - ta - bi - tur do - mi - nus in o - pe - ri - bus su - is.



(c) *Rex caeli domine*, in mixed parallel and oblique organum

50

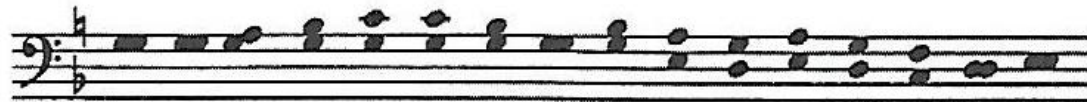
Principal Voice
Organal Voice



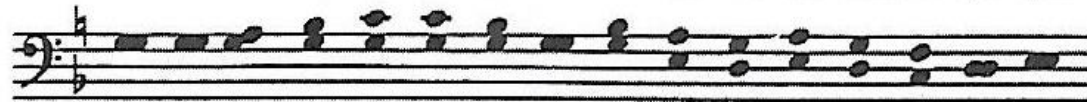
Rex cae - li do - mi - ne ma - ris un - di - so - ni.



Ty - tan - is ni - ti - di qual - li - di - que so - li.



Te hu - mi - les fa - mu - li mo - du - lis ve - ne - ran - do pi - is.



Se iu - be - as fla - gi - tant va - ri - is li - be - ra - re ma - lis.

Rex caeli domine maris undisoni,
Tytanis nitidi squalidique soli.

King of Heaven, Lord of the roaring sea,
of the shining Titan (Sun) and the squalid earth,

Te humiles famuli modulis venerando piis,

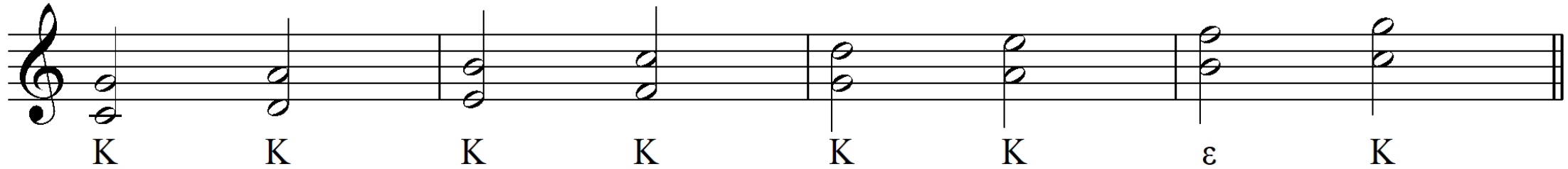
Your humble servants, worshipping you with
pious melodies,

Se iubeas flagitant variis liberare malis.

Beseech you, as you command, to free them
from diverse ills.



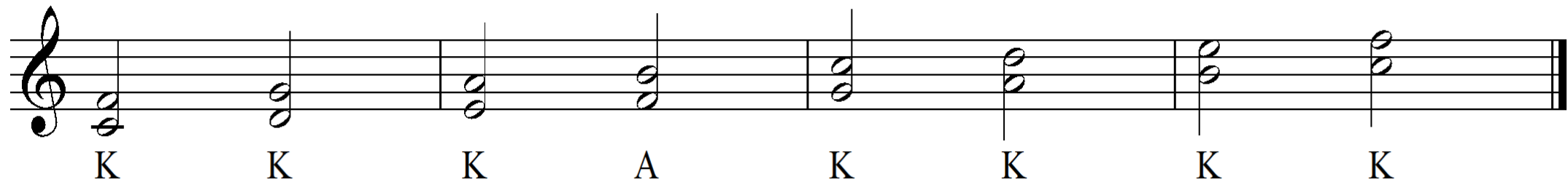
8 Η 5η στη μείζονα: 6 Καθαρές, 1 ελαττωμένη



A musical staff in treble clef showing the 5th scale. It consists of eight measures, each containing a pair of notes. The notes are: C4 (middle C) and D4 (first line), D4 and E4 (first space), E4 and F4 (second line), F4 and G4 (second space), G4 and A4 (third line), A4 and B4 (third space), B4 and C5 (fourth line), and C5 and D5 (fourth space). The notes are labeled with 'Κ' for natural notes and 'ε' for the lowered B4 note.

Κ Κ Κ Κ Κ Κ ε Κ

7 Η 4η στη μείζονα: 6 Καθαρές, 1 Αυξημένη



A musical staff in treble clef showing the 4th scale. It consists of eight measures, each containing a pair of notes. The notes are: C4 (middle C) and D4 (first line), D4 and E4 (first space), E4 and F4 (second line), F4 and G4 (second space), G4 and A4 (third line), A4 and B4 (third space), B4 and C5 (fourth line), and C5 and D5 (fourth space). The notes are labeled with 'Κ' for natural notes and 'Α' for the raised F4 note.

Κ Κ Κ Α Κ Κ Κ Κ

4.Μελωδική prima vista (από το 2^ο μάθημα)

♩ 1. Τονικότητα: _____, αρχική & τελική βαθμίδα: _____, έκταση: _____, αριθμός φράσεων: _____

1. L.v.Beethoven (1770-1827)
Συμφωνία Νο.9, Op.125, σε ρε- (1822-4)
IV.Finale (μμ92-107): Ode an die Freude

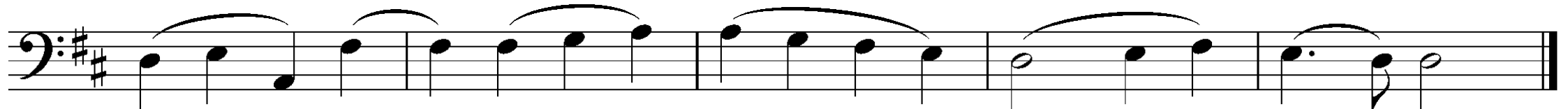
Allegro assai



7

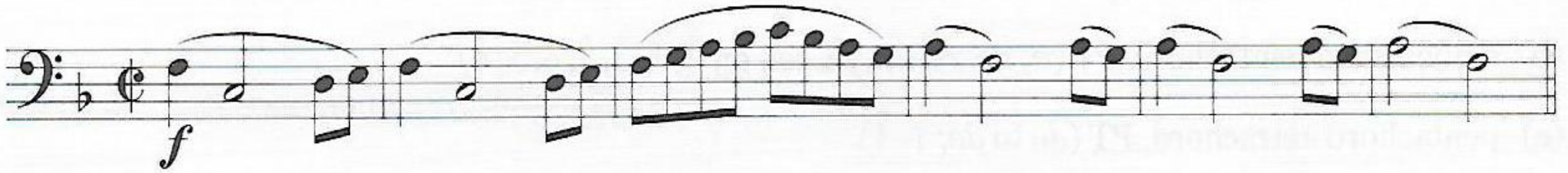


12



♩ 1. Τονικότητα: _____, αρχική & τελική βαθμίδα: _____, έκταση: _____, αριθμός φράσεων: _____

C. P. E. Bach, March (adapted)



♩ 1. Τονικότητα: _____, αρχική & τελική βαθμίδα: _____, έκταση: _____, αριθμός φράσεων: _____

Melody 7 Mozart, Piano Sonata in G Major, K. 283, second movement (adapted): TP

The image shows two staves of musical notation for a melody. Both staves are in bass clef, G major (one flat), and common time (C). The first staff starts with a dynamic marking of *mf* and a fermata over the first measure. The second staff starts with a fingering '5' above the first measure and also has a fermata over the first measure. The melody consists of a sequence of notes: G2, A2, B2, C3, D3, E3, F3, G3, A3, B3, C4, D4, E4, F4, G4, A4, B4, C5, D5, E5, F5, G5, A5, B5, C6, D6, E6, F6, G6, A6, B6, C7, D7, E7, F7, G7, A7, B7, C8, D8, E8, F8, G8, A8, B8, C9, D9, E9, F9, G9, A9, B9, C10, D10, E10, F10, G10, A10, B10, C11, D11, E11, F11, G11, A11, B11, C12, D12, E12, F12, G12, A12, B12, C13, D13, E13, F13, G13, A13, B13, C14, D14, E14, F14, G14, A14, B14, C15, D15, E15, F15, G15, A15, B15, C16, D16, E16, F16, G16, A16, B16, C17, D17, E17, F17, G17, A17, B17, C18, D18, E18, F18, G18, A18, B18, C19, D19, E19, F19, G19, A19, B19, C20, D20, E20, F20, G20, A20, B20, C21, D21, E21, F21, G21, A21, B21, C22, D22, E22, F22, G22, A22, B22, C23, D23, E23, F23, G23, A23, B23, C24, D24, E24, F24, G24, A24, B24, C25, D25, E25, F25, G25, A25, B25, C26, D26, E26, F26, G26, A26, B26, C27, D27, E27, F27, G27, A27, B27, C28, D28, E28, F28, G28, A28, B28, C29, D29, E29, F29, G29, A29, B29, C30, D30, E30, F30, G30, A30, B30, C31, D31, E31, F31, G31, A31, B31, C32, D32, E32, F32, G32, A32, B32, C33, D33, E33, F33, G33, A33, B33, C34, D34, E34, F34, G34, A34, B34, C35, D35, E35, F35, G35, A35, B35, C36, D36, E36, F36, G36, A36, B36, C37, D37, E37, F37, G37, A37, B37, C38, D38, E38, F38, G38, A38, B38, C39, D39, E39, F39, G39, A39, B39, C40, D40, E40, F40, G40, A40, B40, C41, D41, E41, F41, G41, A41, B41, C42, D42, E42, F42, G42, A42, B42, C43, D43, E43, F43, G43, A43, B43, C44, D44, E44, F44, G44, A44, B44, C45, D45, E45, F45, G45, A45, B45, C46, D46, E46, F46, G46, A46, B46, C47, D47, E47, F47, G47, A47, B47, C48, D48, E48, F48, G48, A48, B48, C49, D49, E49, F49, G49, A49, B49, C50, D50, E50, F50, G50, A50, B50, C51, D51, E51, F51, G51, A51, B51, C52, D52, E52, F52, G52, A52, B52, C53, D53, E53, F53, G53, A53, B53, C54, D54, E54, F54, G54, A54, B54, C55, D55, E55, F55, G55, A55, B55, C56, D56, E56, F56, G56, A56, B56, C57, D57, E57, F57, G57, A57, B57, C58, D58, E58, F58, G58, A58, B58, C59, D59, E59, F59, G59, A59, B59, C60, D60, E60, F60, G60, A60, B60, C61, D61, E61, F61, G61, A61, B61, C62, D62, E62, F62, G62, A62, B62, C63, D63, E63, F63, G63, A63, B63, C64, D64, E64, F64, G64, A64, B64, C65, D65, E65, F65, G65, A65, B65, C66, D66, E66, F66, G66, A66, B66, C67, D67, E67, F67, G67, A67, B67, C68, D68, E68, F68, G68, A68, B68, C69, D69, E69, F69, G69, A69, B69, C70, D70, E70, F70, G70, A70, B70, C71, D71, E71, F71, G71, A71, B71, C72, D72, E72, F72, G72, A72, B72, C73, D73, E73, F73, G73, A73, B73, C74, D74, E74, F74, G74, A74, B74, C75, D75, E75, F75, G75, A75, B75, C76, D76, E76, F76, G76, A76, B76, C77, D77, E77, F77, G77, A77, B77, C78, D78, E78, F78, G78, A78, B78, C79, D79, E79, F79, G79, A79, B79, C80, D80, E80, F80, G80, A80, B80, C81, D81, E81, F81, G81, A81, B81, C82, D82, E82, F82, G82, A82, B82, C83, D83, E83, F83, G83, A83, B83, C84, D84, E84, F84, G84, A84, B84, C85, D85, E85, F85, G85, A85, B85, C86, D86, E86, F86, G86, A86, B86, C87, D87, E87, F87, G87, A87, B87, C88, D88, E88, F88, G88, A88, B88, C89, D89, E89, F89, G89, A89, B89, C90, D90, E90, F90, G90, A90, B90, C91, D91, E91, F91, G91, A91, B91, C92, D92, E92, F92, G92, A92, B92, C93, D93, E93, F93, G93, A93, B93, C94, D94, E94, F94, G94, A94, B94, C95, D95, E95, F95, G95, A95, B95, C96, D96, E96, F96, G96, A96, B96, C97, D97, E97, F97, G97, A97, B97, C98, D98, E98, F98, G98, A98, B98, C99, D99, E99, F99, G99, A99, B99, C100, D100, E100, F100, G100, A100, B100, C101, D101, E101, F101, G101, A101, B101, C102, D102, E102, F102, G102, A102, B102, C103, D103, E103, F103, G103, A103, B103, C104, D104, E104, F104, G104, A104, B104, C105, D105, E105, F105, G105, A105, B105, C106, D106, E106, F106, G106, A106, B106, C107, D107, E107, F107, G107, A107, B107, C108, D108, E108, F108, G108, A108, B108, C109, D109, E109, F109, G109, A109, B109, C110, D110, E110, F110, G110, A110, B110, C111, D111, E111, F111, G111, A111, B111, C112, D112, E112, F112, G112, A112, B112, C113, D113, E113, F113, G113, A113, B113, C114, D114, E114, F114, G114, A114, B114, C115, D115, E115, F115, G115, A115, B115, C116, D116, E116, F116, G116, A116, B116, C117, D117, E117, F117, G117, A117, B117, C118, D118, E118, F118, G118, A118, B118, C119, D119, E119, F119, G119, A119, B119, C120, D120, E120, F120, G120, A120, B120, C121, D121, E121, F121, G121, A121, B121, C122, D122, E122, F122, G122, A122, B122, C123, D123, E123, F123, G123, A123, B123, C124, D124, E124, F124, G124, A124, B124, C125, D125, E125, F125, G125, A125, B125, C126, D126, E126, F126, G126, A126, B126, C127, D127, E127, F127, G127, A127, B127, C128, D128, E128, F128, G128, A128, B128, C129, D129, E129, F129, G129, A129, B129, C130, D130, E130, F130, G130, A130, B130, C131, D131, E131, F131, G131, A131, B131, C132, D132, E132, F132, G132, A132, B132, C133, D133, E133, F133, G133, A133, B133, C134, D134, E134, F134, G134, A134, B134, C135, D135, E135, F135, G135, A135, B135, C136, D136, E136, F136, G136, A136, B136, C137, D137, E137, F137, G137, A137, B137, C138, D138, E138, F138, G138, A138, B138, C139, D139, E139, F139, G139, A139, B139, C140, D140, E140, F140, G140, A140, B140, C141, D141, E141, F141, G141, A141, B141, C142, D142, E142, F142, G142, A142, B142, C143, D143, E143, F143, G143, A143, B143, C144, D144, E144, F144, G144, A144, B144, C145, D145, E145, F145, G145, A145, B145, C146, D146, E146, F146, G146, A146, B146, C147, D147, E147, F147, G147, A147, B147, C148, D148, E148, F148, G148, A148, B148, C149, D149, E149, F149, G149, A149, B149, C150, D150, E150, F150, G150, A150, B150, C151, D151, E151, F151, G151, A151, B151, C152, D152, E152, F152, G152, A152, B152, C153, D153, E153, F153, G153, A153, B153, C154, D154, E154, F154, G154, A154, B154, C155, D155, E155, F155, G155, A155, B155, C156, D156, E156, F156, G156, A156, B156, C157, D157, E157, F157, G157, A157, B157, C158, D158, E158, F158, G158, A158, B158, C159, D159, E159, F159, G159, A159, B159, C160, D160, E160, F160, G160, A160, B160, C161, D161, E161, F161, G161, A161, B161, C162, D162, E162, F162, G162, A162, B162, C163, D163, E163, F163, G163, A163, B163, C164, D164, E164, F164, G164, A164, B164, C165, D165, E165, F165, G165, A165, B165, C166, D166, E166, F166, G166, A166, B166, C167, D167, E167, F167, G167, A167, B167, C168, D168, E168, F168, G168, A168, B168, C169, D169, E169, F169, G169, A169, B169, C170, D170, E170, F170, G170, A170, B170, C171, D171, E171, F171, G171, A171, B171, C172, D172, E172, F172, G172, A172, B172, C173, D173, E173, F173, G173, A173, B173, C174, D174, E174, F174, G174, A174, B174, C175, D175, E175, F175, G175, A175, B175, C176, D176, E176, F176, G176, A176, B176, C177, D177, E177, F177, G177, A177, B177, C178, D178, E178, F178, G178, A178, B178, C179, D179, E179, F179, G179, A179, B179, C180, D180, E180, F180, G180, A180, B180, C181, D181, E181, F181, G181, A181, B181, C182, D182, E182, F182, G182, A182, B182, C183, D183, E183, F183, G183, A183, B183, C184, D184, E184, F184, G184, A184, B184, C185, D185, E185, F185, G185, A185, B185, C186, D186, E186, F186, G186, A186, B186, C187, D187, E187, F187, G187, A187, B187, C188, D188, E188, F188, G188, A188, B188, C189, D189, E189, F189, G189, A189, B189, C190, D190, E190, F190, G190, A190, B190, C191, D191, E191, F191, G191, A191, B191, C192, D192, E192, F192, G192, A192, B192, C193, D193, E193, F193, G193, A193, B193, C194, D194, E194, F194, G194, A194, B194, C195, D195, E195, F195, G195, A195, B195, C196, D196, E196, F196, G196, A196, B196, C197, D197, E197, F197, G197, A197, B197, C198, D198, E198, F198, G198, A198, B198, C199, D199, E199, F199, G199, A199, B199, C200, D200, E200, F200, G200, A200, B200, C201, D201, E201, F201, G201, A201, B201, C202, D202, E202, F202, G202, A202, B202, C203, D203, E203, F203, G203, A203, B203, C204, D204, E204, F204, G204, A204, B204, C205, D205, E205, F205, G205, A205, B205, C206, D206, E206, F206, G206, A206, B206, C207, D207, E207, F207, G207, A207, B207, C208, D208, E208, F208, G208, A208, B208, C209, D209, E209, F209, G209, A209, B209, C210, D210, E210, F210, G210, A210, B210, C211, D211, E211, F211, G211, A211, B211, C212, D212, E212, F212, G212, A212, B212, C213, D213, E213, F213, G213, A213, B213, C214, D214, E214, F214, G214, A214, B214, C215, D215, E215, F215, G215, A215, B215, C216, D216, E216, F216, G216, A216, B216, C217, D217, E217, F217, G217, A217, B217, C218, D218, E218, F218, G218, A218, B218, C219, D219, E219, F219, G219, A219, B219, C220, D220, E220, F220, G220, A220, B220, C221, D221, E221, F221, G221, A221, B221, C222, D222, E222, F222, G222, A222, B222, C223, D223, E223, F223, G223, A223, B223, C224, D224, E224, F224, G224, A224, B224, C225, D225, E225, F225, G225, A225, B225, C226, D226, E226, F226, G226, A226, B226, C227, D227, E227, F227, G227, A227, B227, C228, D228, E228, F228, G228, A228, B228, C229, D229, E229, F229, G229, A229, B229, C230, D230, E230, F230, G230, A230, B230, C231, D231, E231, F231, G231, A231, B231, C232, D232, E232, F232, G232, A232, B232, C233, D233, E233, F233, G233, A233, B233, C234, D234, E234, F234, G234, A234, B234, C235, D235, E235, F235, G235, A235, B235, C236, D236, E236, F236, G236, A236, B236, C237, D237, E237, F237, G237, A237, B237, C238, D238, E238, F238, G238, A238, B238, C239, D239, E239, F239, G239, A239, B239, C240, D240, E240, F240, G240, A240, B240, C241, D241, E241, F241, G241, A241, B241, C242, D242, E242, F242, G242, A242, B242, C243, D243, E243, F243, G243, A243, B243, C244, D244, E244, F244, G244, A244, B244, C245, D245, E245, F245, G245, A245, B245, C246, D246, E246, F246, G246, A246, B246, C247, D247, E247, F247, G247, A247, B247, C248, D248, E248, F248, G248, A248, B248, C249, D249, E249, F249, G249, A249, B249, C250, D250, E250, F250, G250, A250, B250, C251, D251, E251, F251, G251, A251, B251, C252, D252, E252, F252, G252, A252, B252, C253, D253, E253, F253, G253, A253, B253, C254, D254, E254, F254, G254, A254, B254, C255, D255, E255, F255, G255, A255, B255, C256, D256, E256, F256, G256, A256, B256, C257, D257, E257, F257, G257, A257, B257, C258, D258, E258, F258, G258, A258, B258, C259, D259, E259, F259, G259, A259, B259, C260, D260, E260, F260, G260, A260, B260, C261, D261, E261, F261, G261, A261, B261, C262, D262, E262, F262, G262, A262, B262, C263, D263, E263, F263, G263, A263, B263, C264, D264, E264, F264, G264, A264, B264, C265, D265, E265, F265, G265, A265, B265, C266, D266, E266, F266, G266, A266, B266, C267, D267, E267, F267, G267, A267, B267, C268, D268, E268, F268, G268, A268, B268, C269, D269, E269, F269, G269, A269, B269, C270, D270, E270, F270, G270, A270, B270, C271, D271, E271, F271, G271, A271, B271, C272, D272, E272, F272, G272, A272, B272, C273, D273, E273, F273, G273, A273, B273, C274, D274, E274, F274, G274, A274, B274, C275, D275, E275, F275, G275, A275, B275, C276, D276, E276, F276, G276, A276, B276, C277, D277, E277, F277, G277, A277, B277, C278, D278, E278, F278, G278, A278, B278, C279, D279, E279, F279, G279, A279, B279, C280, D280, E280, F280, G280, A280, B280, C281, D281, E281, F281, G281, A281, B281, C282, D282, E282, F282, G282, A282, B282, C283, D283, E283, F283, G283, A283, B283, C284, D284, E284, F284, G284, A284, B284, C285, D285, E285, F285, G285, A285, B285, C286, D286, E286, F286, G286, A286, B286, C287, D287, E287, F287, G287, A287, B287, C288, D288, E288, F288, G288, A288, B288, C289, D289, E289, F289, G289, A289, B289, C290, D290, E290, F290, G290, A290, B290, C291, D291, E291, F291, G291, A291, B291, C292, D292, E292, F292, G292, A292, B292, C293, D293, E293, F293, G293, A293, B293, C294, D294, E294, F294, G294, A294, B294, C295, D295, E295, F295, G295, A295, B295, C296, D296, E296, F296, G296, A296, B296, C297, D297, E297, F297, G297, A297, B297, C298, D298, E298, F298, G298, A298, B298, C299, D299, E299, F299, G299, A299, B299, C300, D300, E300, F300, G300, A300, B300, C301, D301, E301, F301, G301, A301, B301, C302, D302, E302, F302, G302, A302, B302, C303, D303, E303, F303, G303, A303, B303, C304, D304, E304, F304, G304, A304, B304, C305, D305, E305, F305, G305, A305, B305, C306, D306, E306, F306, G306, A306, B306, C307, D307, E307, F307, G307, A307, B307, C308, D308, E308, F308, G308, A308, B308, C309, D309, E309, F309, G309, A309, B309, C310, D310, E310, F310, G310, A310, B310, C311, D311, E311, F311, G311, A311, B311, C312, D312, E312, F312, G312, A312, B312, C313, D313, E313, F313, G313, A313, B313, C314, D314, E314, F314, G314, A314, B314, C315, D315, E315, F315, G315, A315, B315, C316, D316, E316, F316, G316, A316, B316, C317, D317, E317, F317, G317, A317, B317, C318, D318, E318, F318, G318, A318, B318, C319, D319, E319, F319, G319, A319, B319, C320, D320, E320, F320, G320, A320, B320, C321, D321, E321, F321, G321, A321, B321, C322, D322, E322, F322, G322, A322, B322, C323, D323, E323, F323, G323, A323, B323, C324, D324, E324, F324, G324, A324, B324, C325, D325, E325, F325, G325, A325, B325, C326, D326, E326, F326, G326, A326, B326, C327, D327, E327, F327, G327, A327, B327, C328, D328, E328, F328, G328, A328, B328, C329, D329, E329, F329, G329, A329, B329, C330, D330, E330, F330, G330, A330, B330, C331, D331, E331, F331, G331, A331, B331, C332, D332, E332, F332, G332, A332, B332, C333, D333, E333, F333, G333, A333, B333, C334, D334, E334, F334, G334, A334, B334, C335, D335, E335, F335, G335, A335, B335, C336, D336, E336, F336, G336, A336, B336, C337, D337, E337, F337, G337, A337, B337, C338, D338, E338, F338, G338, A338, B338, C339, D339, E339, F339, G339, A339, B339, C340, D340, E340, F340, G340, A340, B340, C341, D341, E341, F341, G341, A341, B341, C342, D342, E342, F342, G342, A342, B342, C343, D343, E343, F343, G343, A343, B343, C344, D344, E344, F344, G344, A344, B344, C345, D345, E345, F345, G345, A345, B345, C346, D346, E346, F346, G346, A346, B346, C347, D347, E347, F347, G347, A347, B347, C348, D348, E348, F348, G348, A348, B348, C349, D349, E349, F349, G349, A349, B349, C350, D350, E350, F350, G350, A350, B350, C351, D351, E351, F351, G351, A351, B351, C352, D352, E352, F352, G352, A352, B352, C353, D353, E353, F353, G353, A353, B353, C354, D354, E354, F354, G354, A354, B354, C355, D355, E355, F355, G355, A355, B355, C356, D356, E356, F356, G356, A356, B356, C357, D357, E357, F357, G357, A357, B357, C358, D358, E358, F358, G358, A358, B358, C359, D359, E359, F359, G359, A359, B359, C360, D360, E360, F360, G360, A360, B360, C361, D361, E361, F361, G361, A361, B361, C362, D362, E362, F362, G362, A362, B362, C363, D363, E363, F363, G363, A363, B363, C364, D364, E364, F364, G364, A364, B364, C365, D365, E365, F365, G365, A365, B365, C366, D366, E366, F366, G366,

Ως το επόμενο μάθημα:

Η εργασία εβδομάδας του 3^{ου} μαθήματος δίνεται αναλυτικά:

Στο Openeclass > Έγγραφα > (ii)Εργασίες για κάθε μάθημα > Άσκηση Ακοής I, Μάθημα 03, Εργασία

Χρησιμοποιήστε τις ασκήσεις σύμφωνα με τις ανάγκες σας.

(Αξιοποιήστε ιδιαίτερα τις ασκήσεις dictée, καθώς και τις ρυθμικές ασκήσεις).